

# CDM Co-ordination Capability Statement



## Why CDM Co-ordination?

The CDM Regulations were introduced on 6<sup>th</sup> April 2007 and replaced the Construction Design & Management Regulations 1994 and the Construction Health, Safety and Welfare Regulations 1996.

The key aim of the 2007 CDM regulations is to integrate health and safety into the management of the project and to encourage a holistic approach to:

- Improve the planning and management of projects from the very start;
- Identify hazards early on, so they can be eliminated or reduced at the design or planning stage and the remaining risks can be properly managed;
- Target effort where it can do the most good in terms of health and safety; and
- Discourage unnecessary bureaucracy.

The 2007 CDM regulations place duties on all those who contribute to the health and safety of a construction project. Duties are placed upon clients, designers and contractors and the regulations create a new duty holder – the CDM Co-ordinator.

## When Does CDM Apply?

The CDM Regulations apply to all construction work. Construction work is defined by the HSE and listed on their web site :- [www.hse.gov.uk/construction/cdm](http://www.hse.gov.uk/construction/cdm)

If a project is defined as a construction project and one of the following points apply, there is a requirement for the client to appoint a CDM Co-ordinator;-

- The works will last more than 30 working days; or
- The works will involve more than 500 person days.

## Our People

LK Management is a consultancy based business. We sell a service not a product and the quality of that service hinges on the people who deliver it.

LK Management searches the country for the best people, hand picking passionate, driven employees with initiative and hands-on experience in CDM Co-ordination.

We have a number of qualified CDM Co-ordinators with the right experience for your project.



## CDMC Services – Pre-Construction Phase

The main duties of a CDM Co-ordinator at the pre-construction phase are:

To advise and assist the client in meeting their duties as a client under CDM 2007, in particular:

- The duty to appoint competent designers and contractors;
- The duty to ensure that adequate arrangements are in place for managing the project;
- Notify HSE about the project;
- Co-ordinate design work, planning and other preparation for construction where relevant to health and safety; and
- Identify and collect the pre-construction information and advise the client if surveys need to be commissioned to fill significant gaps.

## CDMC Services Construction Phase

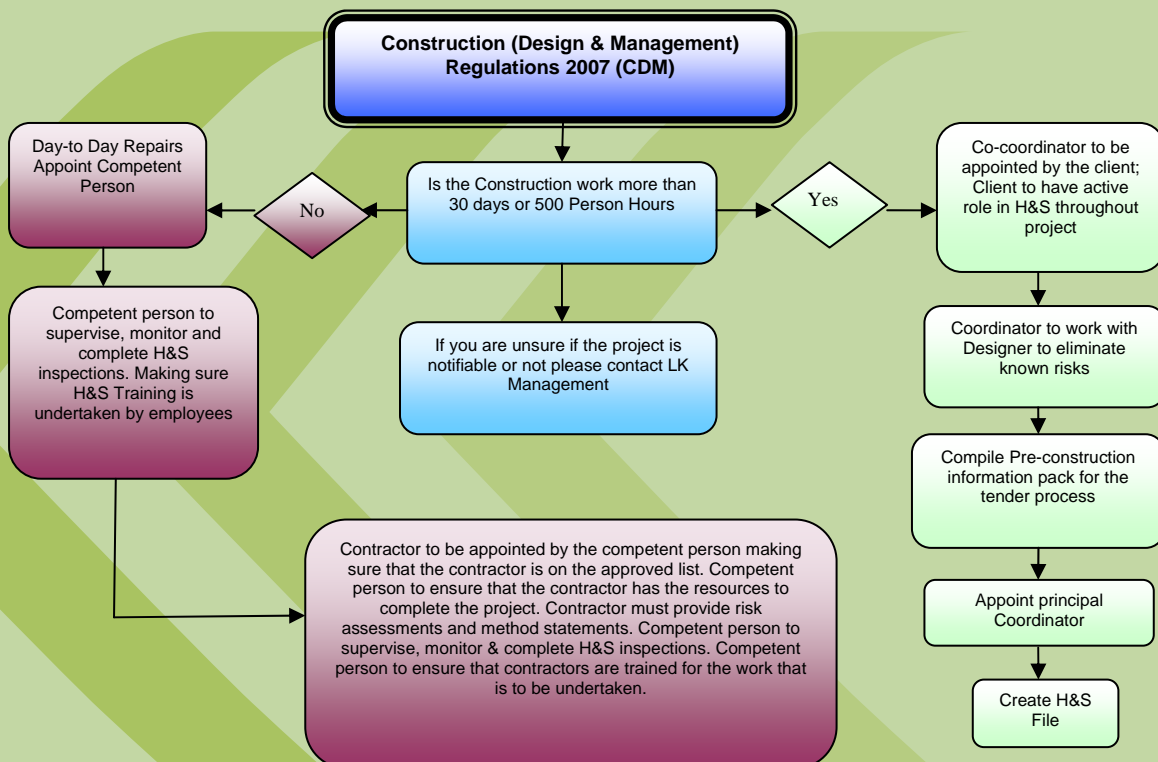
The main duties of a CDM Co-ordinator at the post-construction phase are:

- Promptly provide pre-construction information in a convenient form to those involved with the design and construction of the structure;
- Manage the flow of health and safety information between clients, designers and contractors;
- Advise the client on the suitability of the initial construction phase plan and the arrangements made to ensure that welfare facilities are on site from the start; and
- Produce or update a relevant, user friendly, health and safety file suitable for future use at the end of the construction phase.

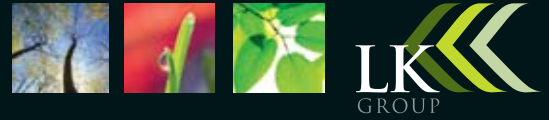
## Further Information

For further information please contact Conor Leyden on:

Tel: 0161 763 7200



# Project Management Capability Statement



## Our Services

LK Management's detailed project management, co-ordination and reporting systems are guided by a robust master plan and an in depth understanding of project constraints and opportunities.

Efficient planning and approval processes, and the direct involvement of senior project managers and directors are just two of the factors that ensure intensive stakeholder consultation and feedback during implementation.

We work with a range of professional architects and designers. Our approach to consultant team project design and documentation is collaborative. However, we expect team members to provide documentation on time and to the highest standard. Our management of consultants is best described as "firm but fair".

We will manage and coordinate the project team to ultimately provide a design that is within the Client's budget expectations. This means that the Project Cost Planner will be involved at all stages of the project to monitor and provide checks. We maintain a Design Process and Control Policy that will be implemented throughout the project, and we will be happy to discuss this with you if requested.

At practical completion many other property professionals lose interest in the project. At LK Management we are meticulous with the detail and service provided at practical completion as we know that the final stages can be the most challenging.

We will manage and co-ordinate the project team to ultimately provide a design that is within the Client's budget expectations. This means that the Project Cost Planner will be involved at all stages of the project to monitor and provide checks. We maintain a Design Process and Control Policy that will be implemented throughout the project, and we will be happy to discuss this with you if requested.

## Project Services

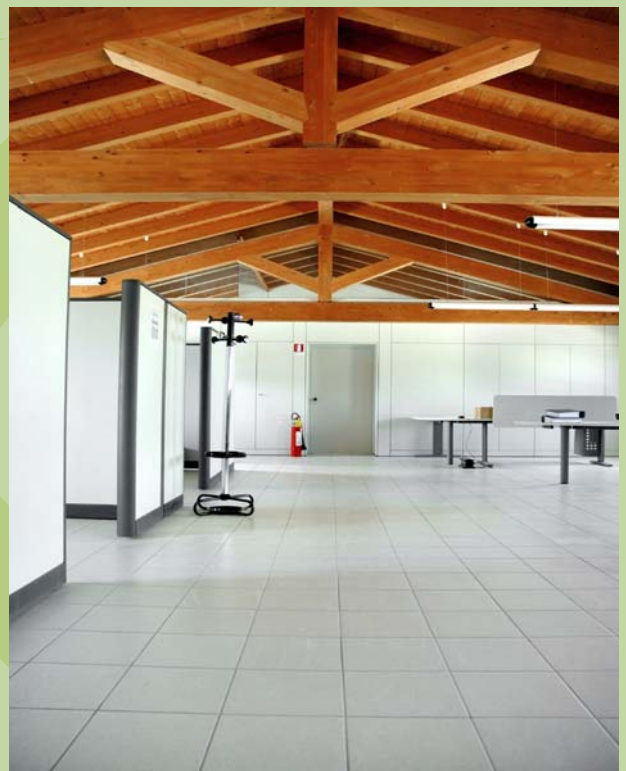
LK Management performs numerous functions within Project and Development management. The following list highlights a sample of these services and demonstrates our expertise:

- Project brief development;
- Project Management Plan preparation;
- Masterplan and concept analysis;
- Consultant team selection / tendering;
- Design Management;
- Construction tendering and award;
- Contract administration;
- Construction / quality monitoring;
- Defect rectification; and
- Handover and occupation:

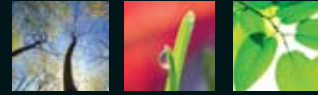
## Further Information

For further information please contact Conor Leyden on:

Tel: 0161 763 7200



# Project Management Capability Statement



## Why Project Management?

Look around you at some of the best examples of built form and urban renewal. Think hospitals, shopping centres, schools, commercial and residential towers, public structures, sports arenas and revitalised urban centres.

What do all of these centres have in common? How did the developers minimise their risk and complete their projects on time and on budget?

The answer: a Project Manager.

Professional project management has become an industry staple. Successful developers know projects do not simply happen. They require energetic, decisive leaders.

## LK Management Background

LK Management is a subsidiary of the LK Group and a consultancy that specialises in project management services to the property development and land use industries throughout UK and Ireland.

We provide a total project management service for building, relocation, environmental engineering, process and other construction projects. Our service is customer-focused and efficient; from agreeing a clear and comprehensive brief with accurately defined objectives, to managing the efforts of the project team from start to finish.

## Our People

LK Management is a consultancy based business. We sell a service not a product and the quality of that service hinges on the people who deliver it.

LK Management searches the country for the best people, hand picking passionate, driven employees with initiative and hands-on experience in project management.

## Our Service Philosophy

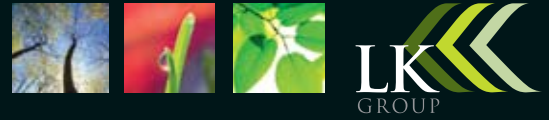
Every organisation has its core business – Architects, Contractors, Engineers, Surveyors are all experts in their own fields.

Similarly, Project Managers exist to coordinate resources, streamline and manage the myriad of details and stages of a project's evolution, so clients can focus on their own core business with peace of mind in the knowledge that their objectives will be met.

Understanding our clients' needs; capturing a project's brief and drawing them into one cohesive, flexible plan for on-time and on-budget delivery is our core business.



# Project Management Capability Statement



## Our Services

LK Management's detailed project management, co-ordination and reporting systems are guided by a robust master plan and an in depth understanding of project constraints and opportunities.

Efficient planning and approval processes, and the direct involvement of senior project managers and directors are just two of the factors that ensure intensive stakeholder consultation and feedback during implementation.

We work with a range of professional architects and designers. Our approach to consultant team project design and documentation is collaborative. However, we expect team members to provide documentation on time and to the highest standard. Our management of consultants is best described as "firm but fair".

We will manage and coordinate the project team to ultimately provide a design that is within the Client's budget expectations. This means that the Project Cost Planner will be involved at all stages of the project to monitor and provide checks. We maintain a Design Process and Control Policy that will be implemented throughout the project, and we will be happy to discuss this with you if requested.

At practical completion many other property professionals lose interest in the project. At LK Management we are meticulous with the detail and service provided at practical completion as we know that the final stages can be the most challenging.

We will manage and co-ordinate the project team to ultimately provide a design that is within the Client's budget expectations. This means that the Project Cost Planner will be involved at all stages of the project to monitor and provide checks. We maintain a Design Process and Control Policy that will be implemented throughout the project, and we will be happy to discuss this with you if requested.

## Project Services

LK Management performs numerous functions within Project and Development management. The following list highlights a sample of these services and demonstrates our expertise:

- Project brief development;
- Project Management Plan preparation;
- Masterplan and concept analysis;
- Consultant team selection / tendering;
- Design Management;
- Construction tendering and award;
- Contract administration;
- Construction / quality monitoring;
- Defect rectification; and
- Handover and occupation:

## Further Information

For further information please contact Conor Leyden on:

Tel: 0161 763 7200

